



Smart Buddy Users Guide

Version 1



Contents

Smart Buddy – User Manual.....	1
Contents.....	2
1. Introduction to Smart Buddy.....	3
2. Installing Smart Buddy.....	4
2.1 Checking for Updates.....	5
2.2 Obtaining License Key.....	6
2.3 Smart Buddy Settings.....	6
3. Using Smart Buddy.....	10
3.1 Importing and Exporting.....	12
3.2 Adding Players and Options.....	15

1. Introduction to Smart Buddy

Smart Buddy is a universal poker buddy list that allows you to see who is online, and what tables they are playing on. Whether you want to monitor friends or professionals, Smart Buddy allows you to easily sort and observe these players without having to jump from site to site.

Smart Buddy enables you to categorize each player in your list with icons and notes that classify the strengths and weaknesses of that player, allowing you to determine if and how to play with that particular player and much more:

- Easily find friends playing online
- Denote fish icons for poor players
- Monitor your favorite professionals (updated weekly)
- Automatically updates players online status
- Create groups to categorize similar player types
- Enhanced filters for concise game or table search
 - o Game type
 - o Poker type
 - o Limit
 - o Stakes
 - o Table options
 - o Tournament options
- Customize alert sounds for different players

- Display active players only
- Highlights newly active player in blue

With the ability to monitor and classify the players in your list, you can easily determine where the fish in your list are biting, and join their table without loading a single poker site. Smart Buddy does all the work, so you can concentrate on just playing poker.

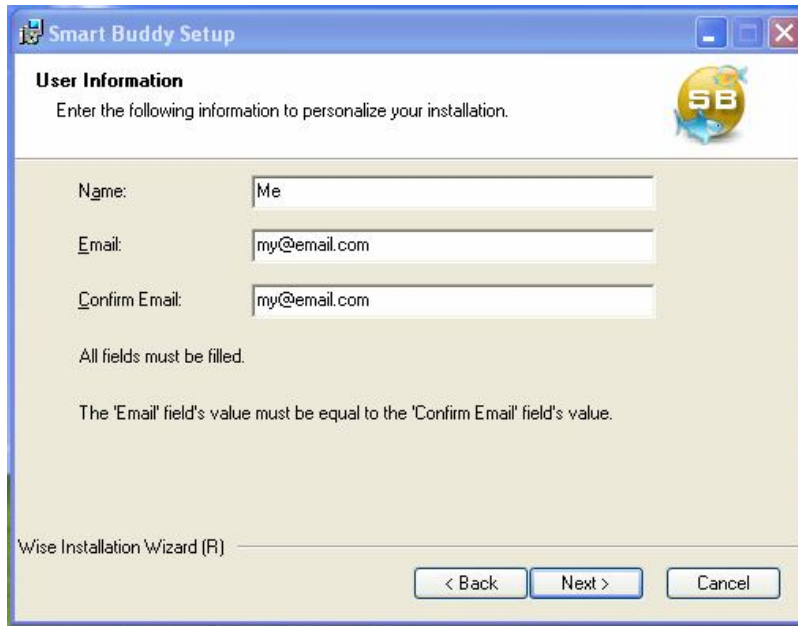
2. Installing Smart Buddy

Installing Smart Buddy is quick and easy.

1. Download Smart Buddy program file from Poker Pro Lab's Website:
<http://pokerprolabs.com/smartbuddy/>
2. Double-click the Smart Buddy file to begin the installation.



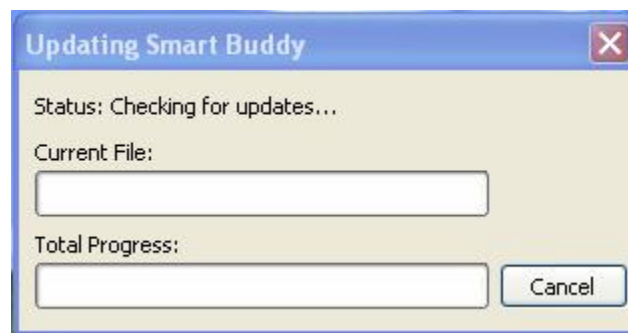
3. The Smart Buddy installer will ask you to provide your name and email address. **Make sure you provide a valid email address in order to receive your Smart Buddy license key.**



Once the installation has completed, click **finish** to exit the installation and load up Smart Buddy.

2.1 Checking For Updates

Smart Buddy will check for **updates** each time it runs. If a new version is available, you will be prompted to download it as shown below:





2.2 Obtaining license key

When you run Smart Buddy, you will be asked to enter your **User ID** and **Password**. These are sent to you via email along with your **license key**.

If you have not already purchased a license key for Smart Buddy, you can choose to obtain a **trial license** instead. Trial licenses allow you unrestricted use of Smart Buddy for 3 days:

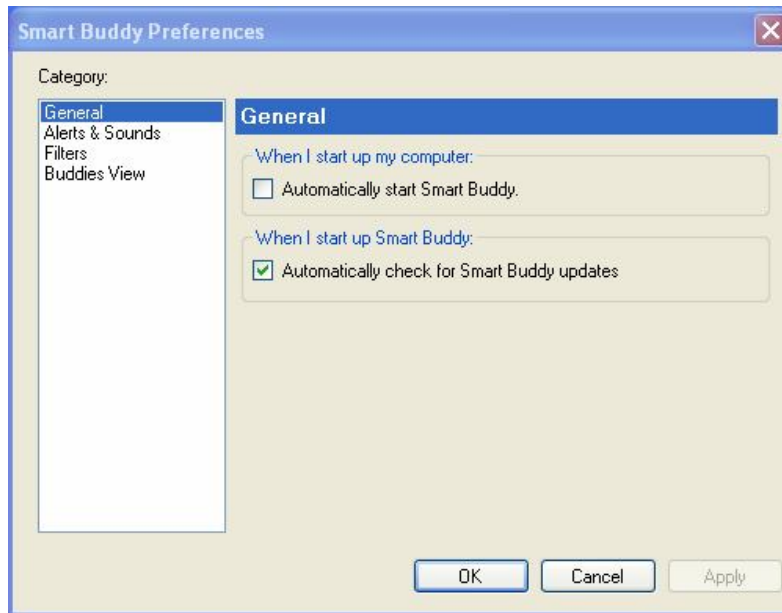
Click on 'Obtain Trial License' and enter your email address, when prompted, to have a trial license immediately sent to you.

2.3 Smart Buddy Settings

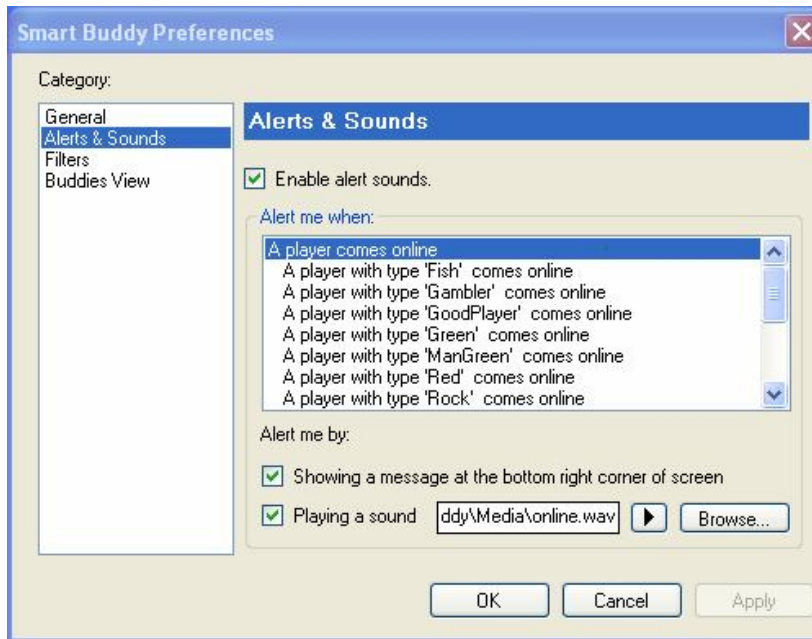
Smart Buddy is ready to use upon installation, but there are several settings you can change. To make changes, go to the settings menu after you have logged in, and choose the **Preferences** option:



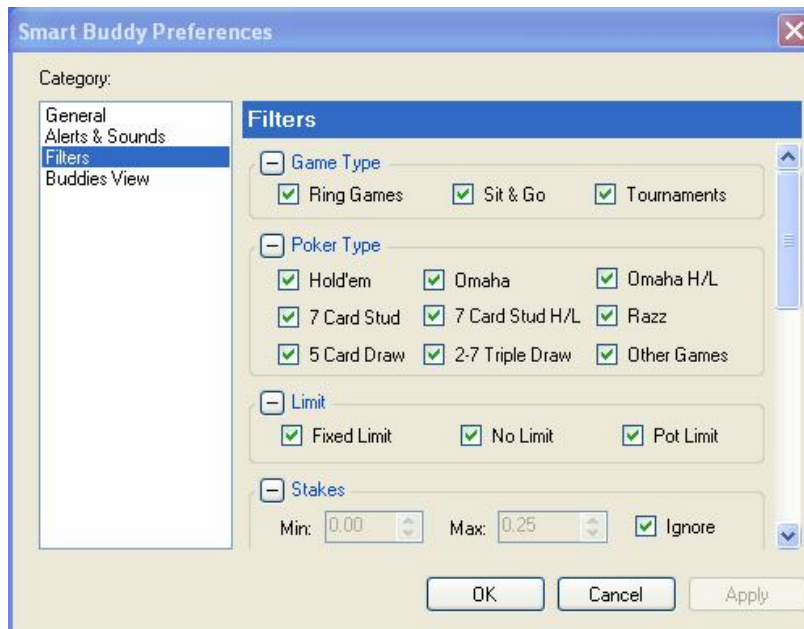
This action will bring you to the screen below so you can check the options you would like to enable:



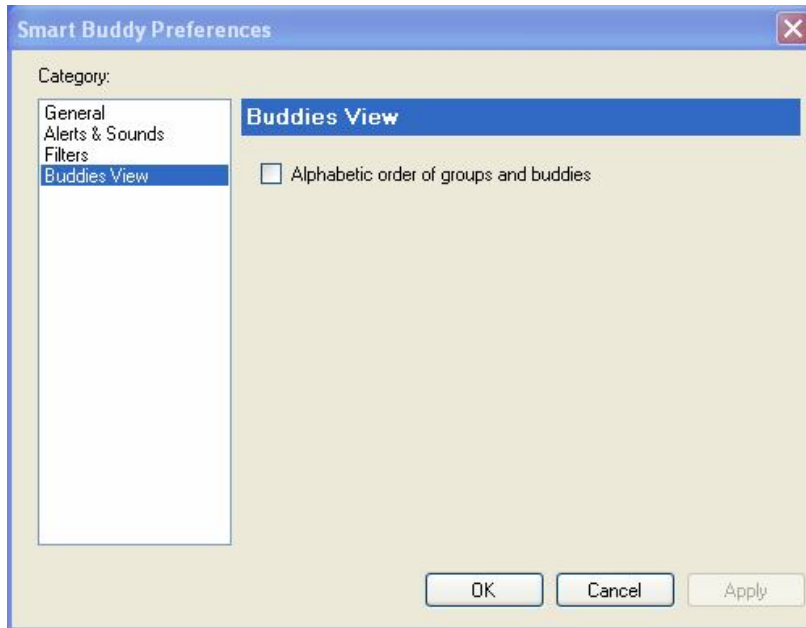
Under **Alerts & Sounds**, you can customize particular sounds and message alerts for different kinds of players, allowing you to know exactly who is coming online. You may also request a message to pop-up in the right hand corner of your screen.



The **Filters** section of Smart **Buddy Preferences** allows you to indicate which **game type, poker type, limit** and so on you would like Smart Buddy utilize. Only those tables that meet your criteria will be shown.



The **Buddies View** section permits you to choose how you view your buddy list, allowing you the option to alphabetize.



3. Using Smart Buddy

Smart Buddy requires no configuration and is extremely easy to use:

1. Load up Smart Buddy and login with your **username** and **password**. Smart buddy already comes preset with a list of **professionals** as shown below:



*This list is **updated weekly** and allows you to monitor any of your favorite professionals.*

2. A **highlighted** player indicates that they are online as shown above with Lee Nelson. Directly below his name is a line that shows which table he is playing on.

★ **LeeNelsonP* (Lee Nelson) - Poker Stars**
Murzim II (fast) - \$100/\$200 - 7 Card Stud Hi/Lo FL Plrs

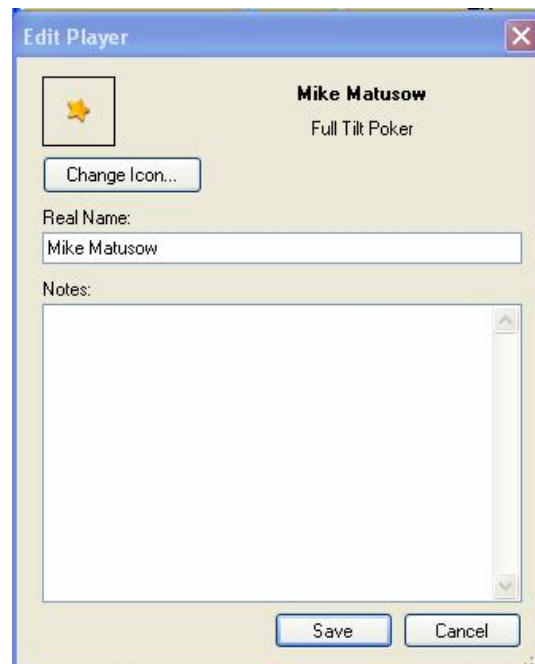
The first part indicates the **name** of the table, followed by the **limit** and **type** of poker. The poker site they are playing on is located directly next to the name above this line. In this case Lee Nelson is playing on **Poker Stars**.

Dragging the mouse over this line will also provide information on number of players, average **pot size**, **percentage** of players in on the flop and **hands per hour**.

When a player first joins a table their name and table information is **highlighted in blue** and remains that color for several minutes until turning a **black** color. When a player is already on your Smart Buddy but joins a new table, that table info will be **highlighted** in blue for several minutes as well.

barryg1 (Barry Greenstein) - Poker Stars
Tercidina - \$100/\$200 - 7 Card Stud Hi/Lo FL Plrs: 6 Av

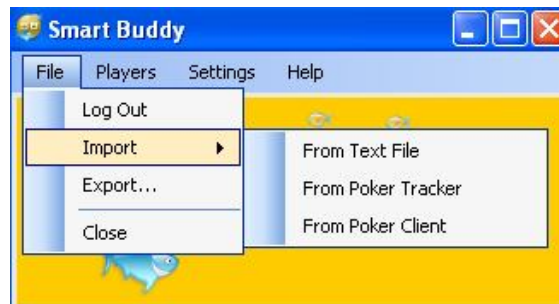
3. To view or join the game Lee is playing on, simply double-click the table info line below his name, and Smart Buddy will immediately load that **poker site**, taking you to his table in just a few seconds. If you do not have that particular site loaded onto your computer, you will be redirected to a **web page** that will allow you to **download** that software and continue with your desired action.
4. You can customize the **Icon** and any notes on a particular player in your buddy, watch or stars list. Simply double click on the name in your list and it will bring up the window shown below:



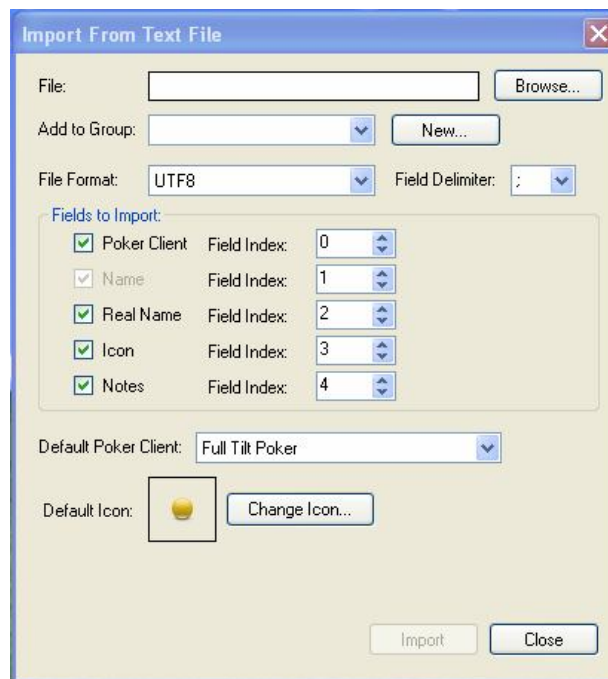
You can also enter the **Real Name** for any player, so you always know who you are playing with at the tables.

3.1 Importing and Exporting

The **'File'** tab at the top of Smart Buddy allows you to **Import** players from **Poker Tracker**, **Poker Client**, or from a **Text File** on your computer. You can also export players to a text file in order to move your buddy list from one computer to another. Simply click on **'File'** to drop the menu down as shown below:



To import from a text file click **"From Text File"**, which will bring up the page shown below:



To select a place to import from, hit **"Browse"** in the top right hand corner and

select the file you want. “**Add to Group**” allows you to add players into the three lists you already have, Buddy, Watch, and Stars, or allows you to create a separate group by hitting “New” and creating a customized name. The “**File Format**” drop down menu allows you to select different file formats, with the most common being “**UTF8**”.

The “**Field Delimiter**” section allows you to indicate if your text file is separated by a semicolon or a comma.

The “**Fields to Import**” section allows you to indicate in which order the information appears in your text file. You can choose the order by designating a number to each section available on the right hand side of each line.

The “**Default Poker Client**” section allows you to select a default if no Poker Client is chosen in the Fields to Import section. “**Change Icon**” will enable you to change the Icon for any selected player.

*You can also easily **logout** or close Smart Buddy from this drop down menu. **Close** allows you to close the main window while the program remains running in the bottom right hand corner start-up menu as shown below.*



You can also **exit** out of the program by clicking the right mouse button over the **Smart Buddy Icon** and hitting **exit**.

To import players from your **Poker Tracker** you will need to fill out the information for the **SQL Server**, **Host** and **Port**, as well as your **User Name**, **Password** and **Database** as shown below:

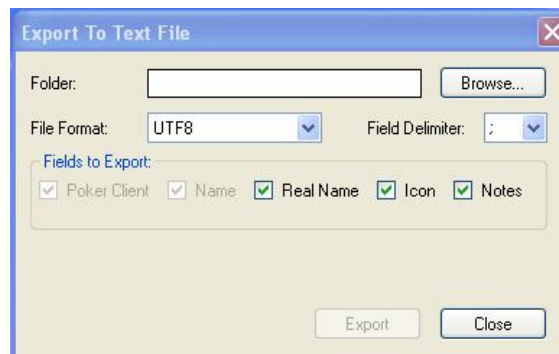
A screenshot of a 'Database Settings' dialog box. The dialog has a title bar with a close button (X). It contains several input fields: 'SQL Server' is a dropdown menu with 'PostgreSQL (Unicode)' selected; 'Host' is a text box with 'localhost'; 'Port' is a spin box with '5432'; 'User Name' is an empty text box; 'Password' is an empty text box; 'Database' is a dropdown menu with 'PTPGSQL1' selected. At the bottom, there are three buttons: 'Test', 'OK', and 'Cancel'.

To import from a **Poker Client**, select the desired Poker Client, select the **group** you wish to add the information into, or create a new group by hitting “**New**”, and click the **Import** button on the bottom as shown below.



*You may also choose to change the icon by selecting the “**Change Icon**” Button.*

To “**Export**” players to a text file, simply click “**Browse**” to indicate the **folder** you care to export into. Be sure to select the **File Format** and **Field Delimiter**. The Fields to Export section will only allow you to export a players Real Name, Icon, and any Notes you may have on that player.



3.2 Adding Players and Options

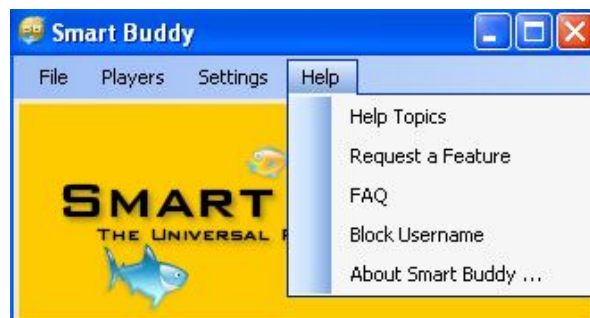
The **'Players'** tab is where you **add players** from almost any poker site to your **groups** or **lists**, and **create, rename** or **delete groups**, enabling you to further customize your Smart Buddy:



4. The **'Setting'** tab is how you update your **'Stars'** list, and apply any filters you may have chosen earlier in **'preferences'**. You may also enable Smart Buddy to only display active players in your lists.



5. The **'Help'** tab is available to answer further questions you may have concerning any aspect of Smart Buddy.



This is an explanation of the features offered as part of Smart Buddy. If you have any questions please contact us at support@pokerprolabs.com.